



**REGIONAL SPECIALISED METEOROLOGICAL CENTRE-TROPICAL CYCLONES, NEW DELHI  
TROPICAL WEATHER OUTLOOK**

**DEMS-RSMC TROPICAL CYCLONES NEW DELHI DATED 22.09.2024**

**TROPICAL WEATHER OUTLOOK FOR NORTH INDIAN OCEAN (THE BAY OF BENGAL AND THE ARABIAN SEA) VALID FOR NEXT 168 HOURS ISSUED AT 0600 UTC OF 22.09.2024 BASED ON 0300 UTC OF 22.09.2024.**

**BAY OF BENGAL:**

AN EAST-WEST TROUGH RUNS FROM ANDHRA PRADESH COAST TO SOUTH COASTAL MYANMAR WITH TWO EMBEDDED UPPER AIR CYCLONIC CIRCULATIONS, ONE OVER WESTCENTRAL BAY OF BENGAL AND ANOTHER OVER SOUTH COASTAL MYANMAR & NEIGHBOURHOOD AND EXTENDS UPTO 5.8 KM ABOVE MEAN SEA LEVEL AT 0300 UTC OF TODAY, THE 22<sup>ND</sup> SEPTEMBER, 2024. THE LATER UPPER AIR CYCLONIC CIRCULATION IS LIKELY TO MOVE WEST-NORTHWESTWARDS.

UNDER THE INFLUENCE OF THESE TWO UPPER AIR CYCLONIC CIRCULATIONS, A LOW-PRESSURE AREA IS LIKELY TO FORM OVER WESTCENTRAL BAY OF BENGAL & NEIGHBOURHOOD AROUND 23<sup>RD</sup> SEPTEMBER, 2024.

SCATTERED LOW AND MEDIUM CLOUDS WITH EMBEDDED INTENSE TO VERY INTENSE CONVECTION LAY OVER NORTH BAY OF BENGAL, ARAKAN COAST, WESTCENTRAL AND SOUTH BAY OF BENGAL, ANDAMAN SEA, GULF OF MARTABAN & TENASSERIM COAST. MINIMUM CLOUD TOP TEMPERATURE IS MINUS 70 TO 90 DEGREE CELSIUS. SCATTERED LOW AND MEDIUM CLOUDS WITH EMBEDDED MODERATE TO INTENSE CONVECTION LAY OVER REST BAY OF BENGAL.

**\*PROBABILITY OF CYCLOGENESIS (FORMATION OF DEPRESSION) DURING NEXT 168 HRS:**

24 HOURS	24-48 HOURS	48-72 HOURS	72-96 HOURS	96-120 HOURS	120-144 HOURS	144-168 HOURS
NIL	LOW	LOW	-	-	NIL	NIL

**\*NOTE: EVERY 24HR FORECAST IS VALID UPTO 0300 UTC (0830 IST) OF NEXT DAY**

**ARABIAN SEA:**

SCATTERED LOW AND MEDIUM CLOUDS WITH EMBEDDED MODERATE TO INTENSE CONVECTION LAY OVER SOUTH PARTS OF SOUTHEAST ARABIAN SEA, MALDIVES AND SOUTH COMORIN AREA. SCATTERED LOW AND MEDIUM CLOUDS

WITH EMBEDDED ISOLATED WEAK TO MODERATE CONVECTION LAY OVER EASTCENTRAL ARABIAN SEA AND REST SOUTH ARABIAN SEA.

**\*PROBABILITY OF CYCLOGENESIS (FORMATION OF DEPRESSION) DURING NEXT 168 HRS:**

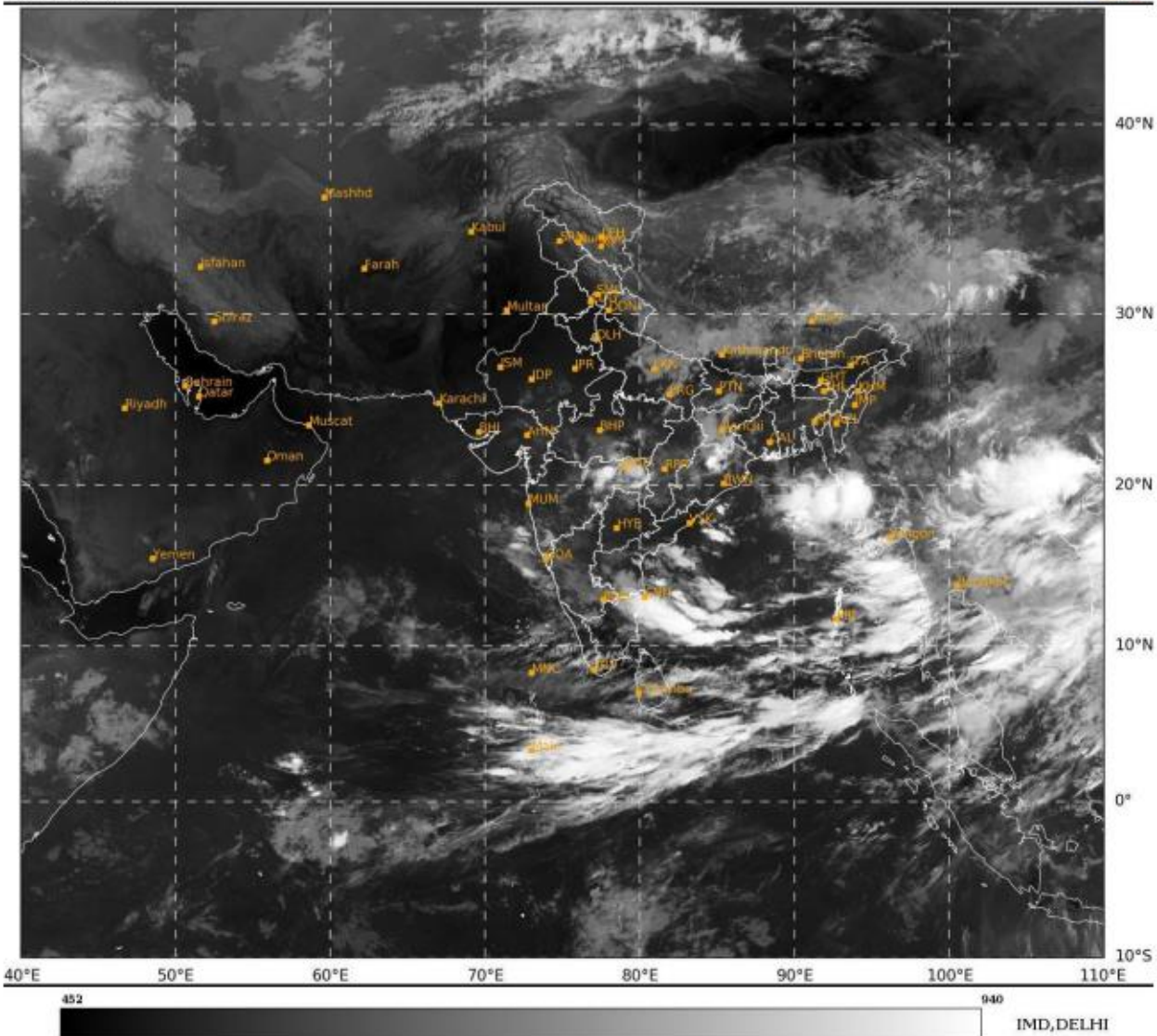
24 HOURS	24-48 HOURS	48-72 HOURS	72-96 HOURS	96-120 HOURS	120-144 HOURS	144-168 HOURS
NIL	NIL	NIL	NIL	NIL	NIL	NIL

\*NOTE: EVERY 24HR FORECAST IS VALID UPTO 0300 UTC (0830 IST) OF NEXT DAY

**REMARKS:** NIL

SAT : INSAT-3DR IMG  
 IMG\_TIR1 10.8 um  
 LIC Mercator

22-09-2024/(0245 to 0312) GMT  
 22-09-2024/(0815 to 0842) IST



Cloud distribution: (a) Isolated: <25%, Scattered:25-50%, Broken: 51-75%, Solid:>75%, Convection Intensity: (a) Weak: Cloud Top Temperature (CTT) >-25°C, (b) Moderate: CTT: - 25°C to -40°C, (c) Intense: CTT: - 41°C to -70°C and (d) Very Intense: : Less than -70°C  
 PROBABILITY OF CYCLOGENESIS (FORMATION OF DEPRESSION):NIL: 0%, LOW: 1-33%, , MODERATE: 34-66% AND HIGH: 67-100%  
 This is a guidance Bulletin for WMO/ESCAP Panel Member countries. Visit respective National websites for Country specific Bulletins